



# **Achievement**

**Board of Education Presentation  
October 25, 2010**

# Written

Standards-Aligned  
PK – 12 Articulation  
Subject areas:  
Math  
Language Arts  
Science  
Social Science  
PE/Health  
World Language  
Career & Technical Education  
Fine Arts



Targets:  
AYP  
Strategic Plan  
District Goals  
SIPs



**Summative**  
**State:** ISAT/IAA/  
ACCESS/PSAE  
**Standardized:**  
Discovery Benchmark,  
Naglieri, Explore, Plan, ISEL,  
DRA,  
**Formative:**  
Outcome Assessments,  
Progress Monitoring,  
Quarter/Semester exams

Instructional Framework  
Component Planning Guide  
FLEX/Response to Intervention  
Extended Learning Time  
Targeted Professional Development  
Resource Adoption  
Differentiation

**Tested**

**Taught**

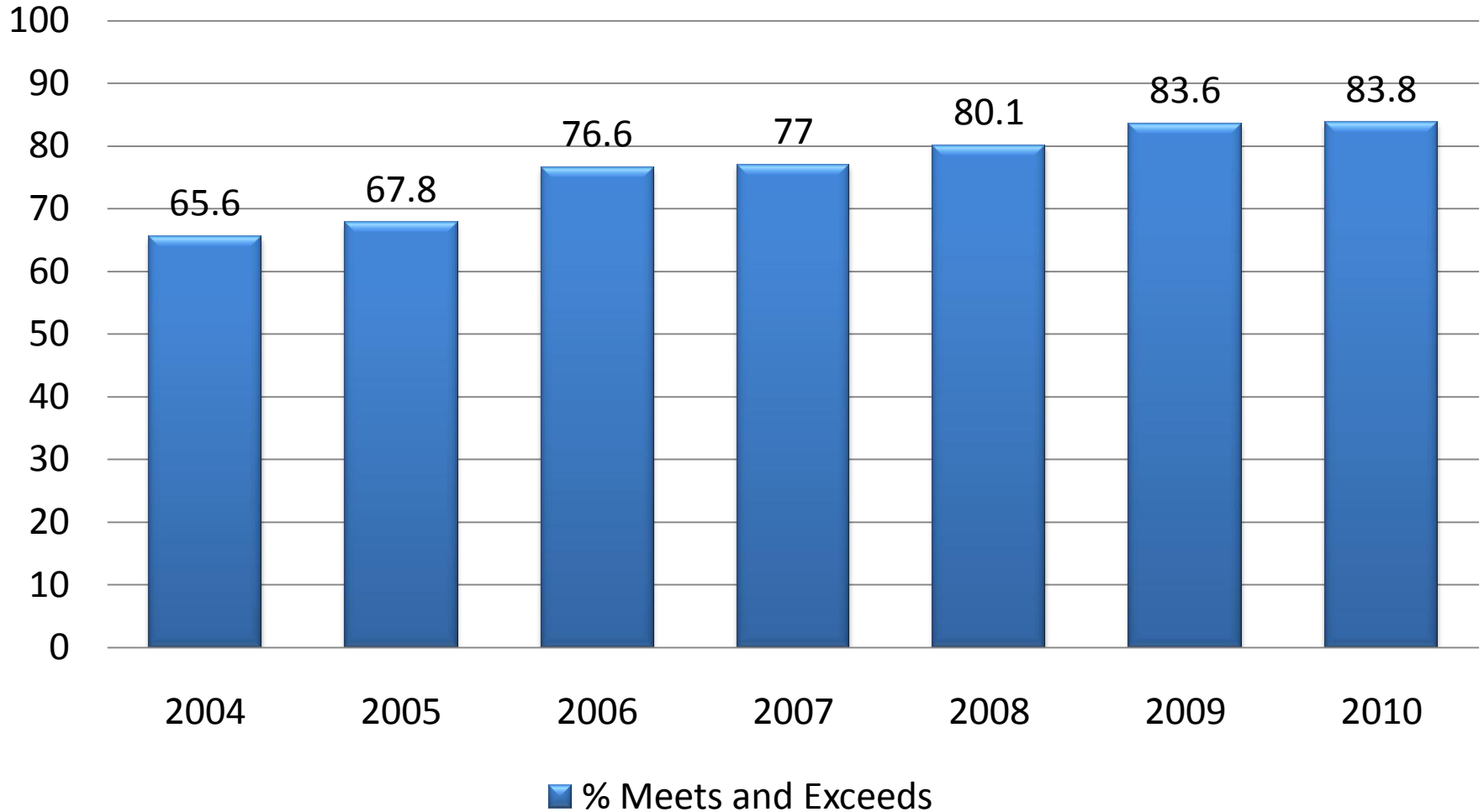
# Student Achievement

## ***Illinois Achievement Tests***

- ***Illinois Standards Achievement Test (ISAT)***  
***Grades 3-8***
- ***Prairie State Achievement Examination (PSAE/ACT)***  
***Grade 11***
- ***Illinois Alternate Assessment (IAA) Special Education***  
***Grades 3-8 and 11***
- ***ACCESS (English Language Learners)***  
***Grades K-12***

# Overall District Performance

## All State Assessments in Reading, Mathematics, & Science



# **No Child Left Behind (NCLB) Subgroups**

*White*

*Black*

*Hispanic*

*Asian/Pacific Islander*

*Alaskan/Native American*

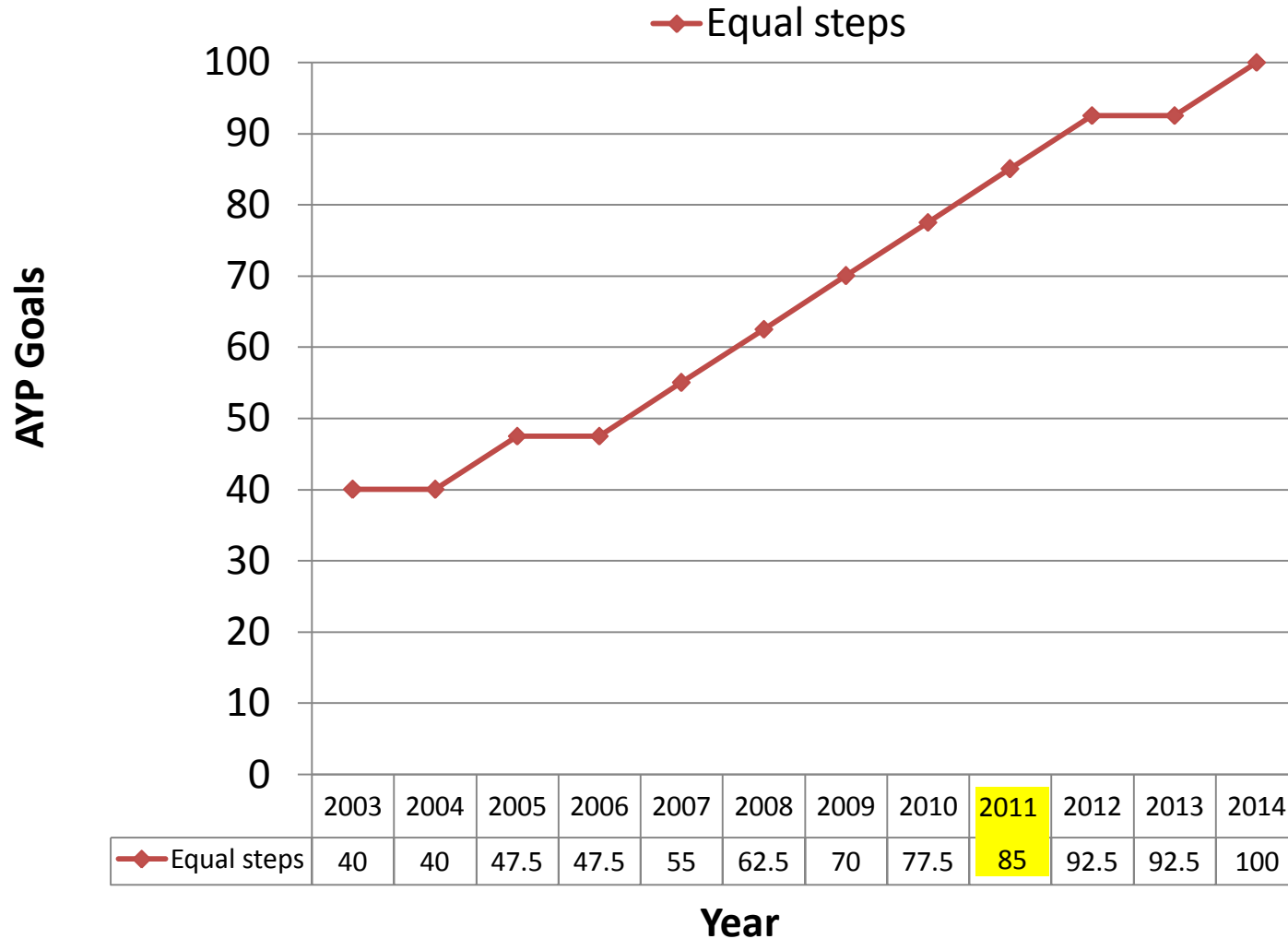
*Multi-Racial*

*Limited English Proficient*

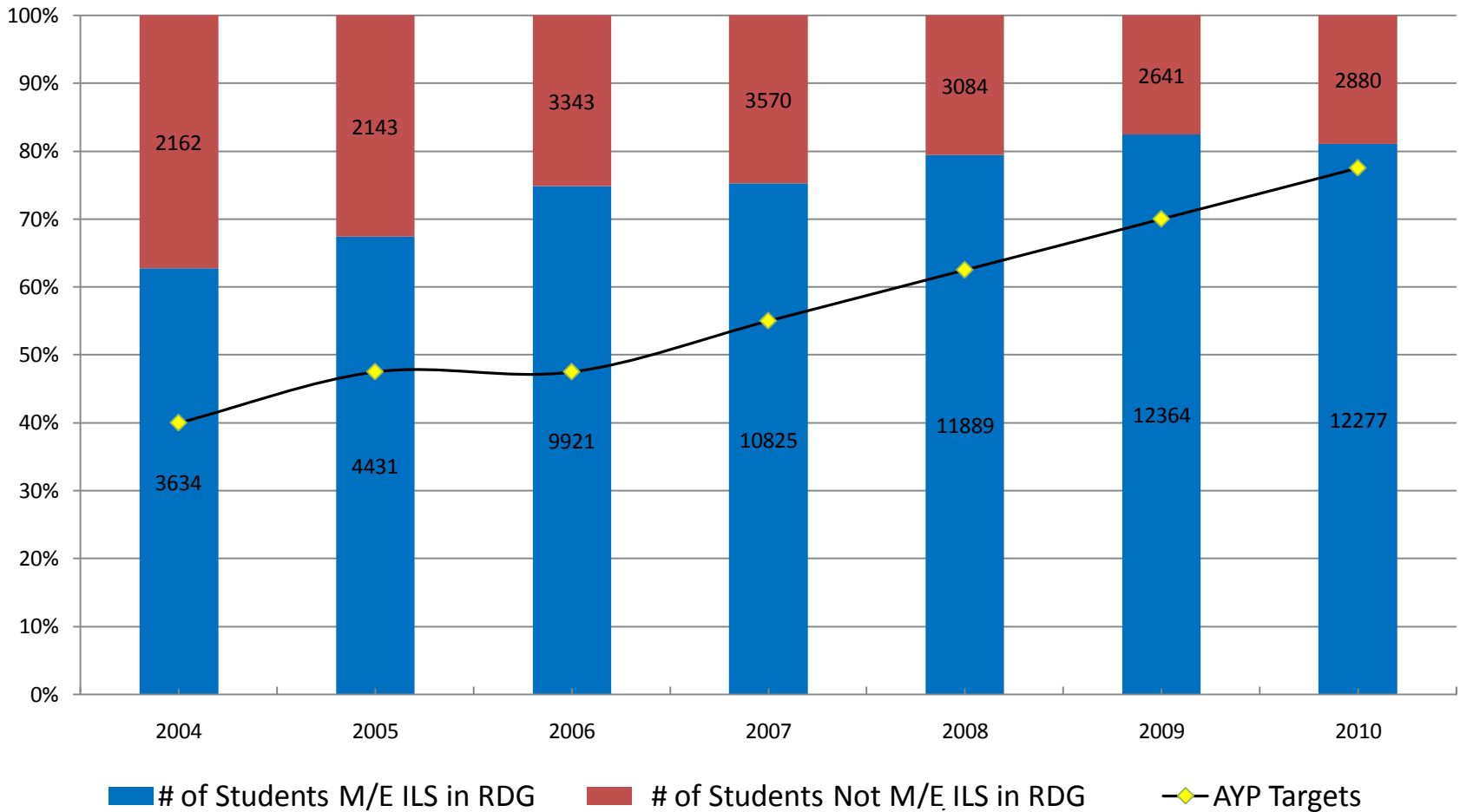
*Students with Disabilities (IEP)*

*Low Income*

# Equal Steps 7.5% Model

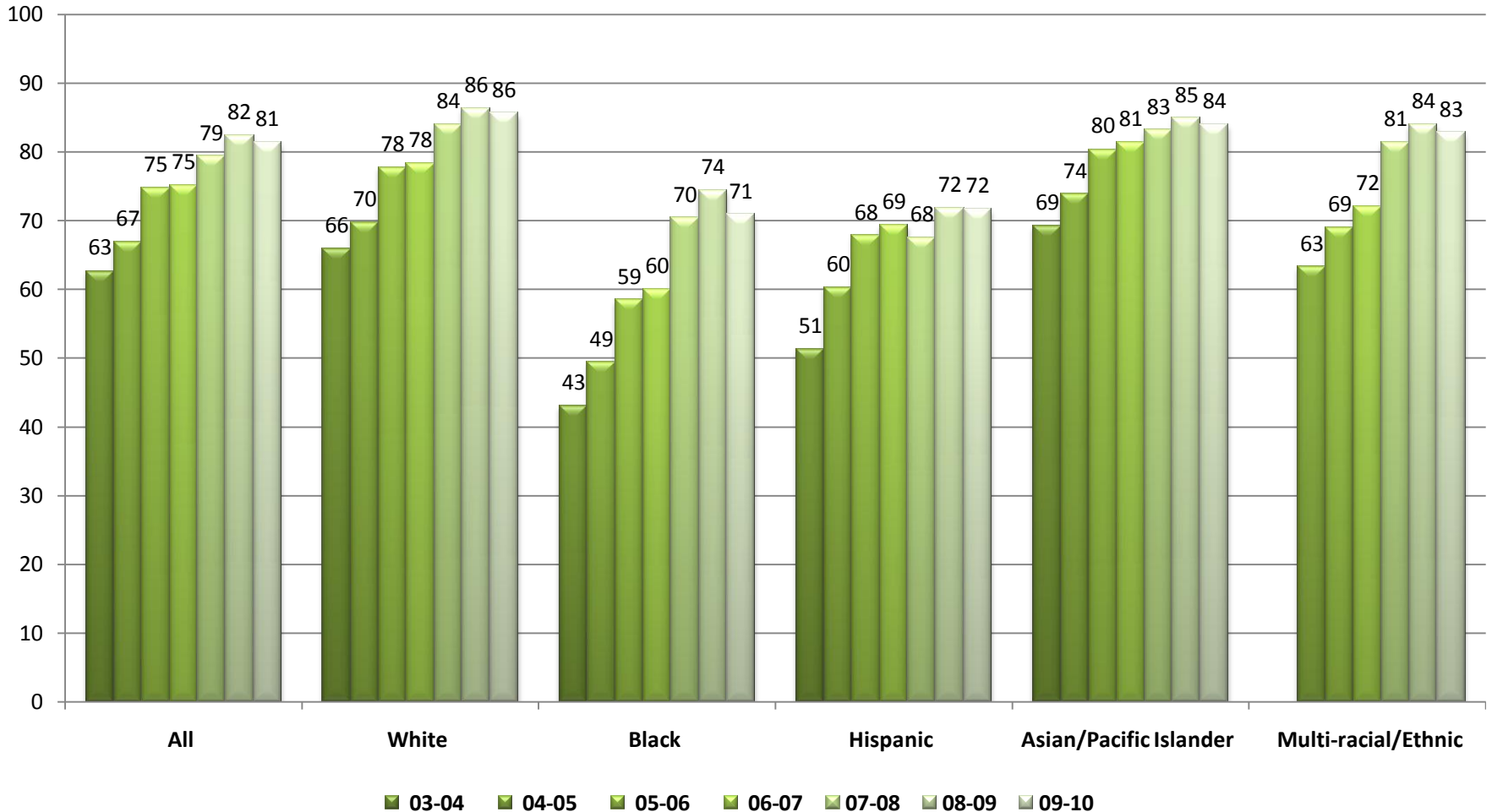


# Reading Seven Year Trend

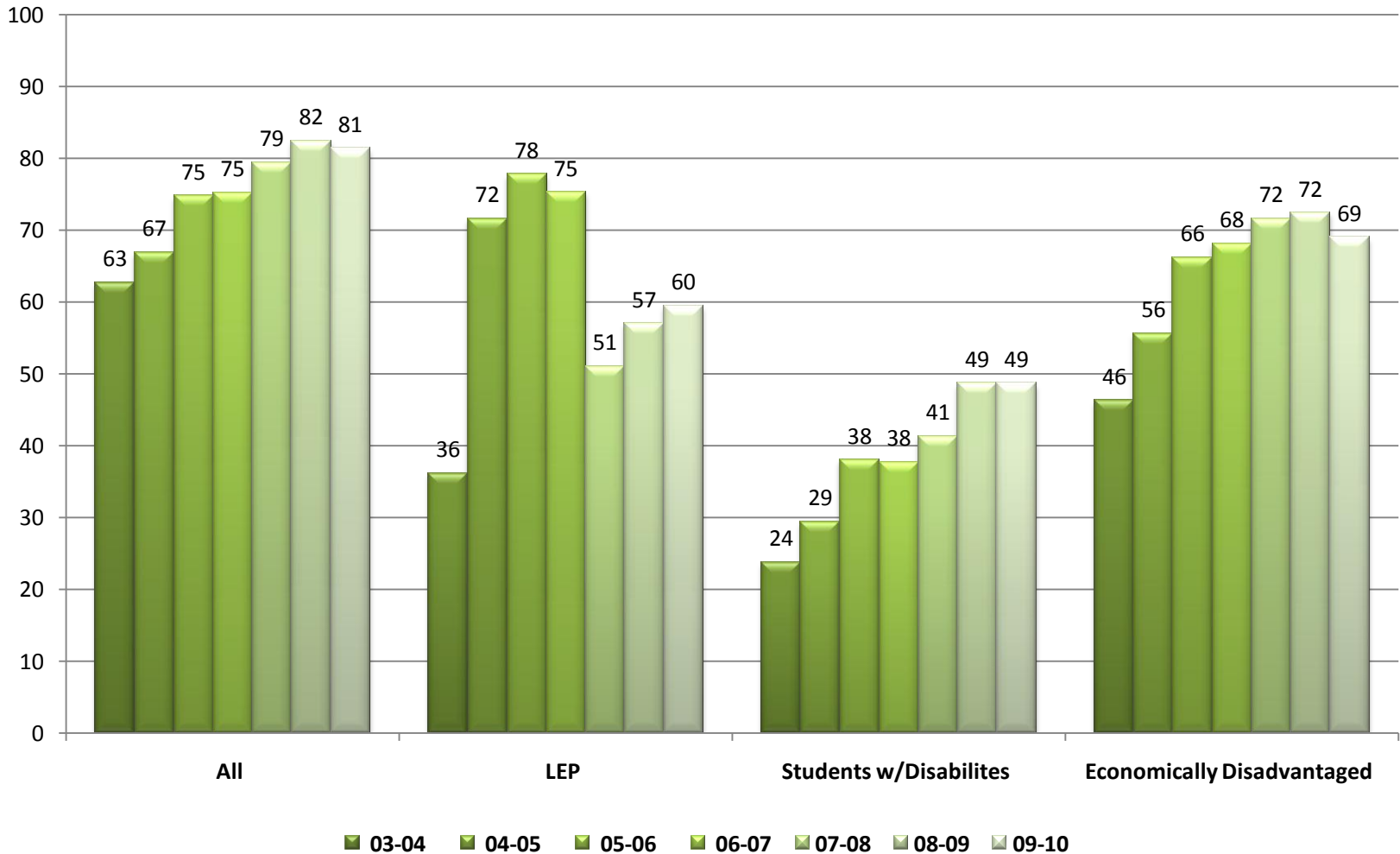


**In 2004 there was a total of 5,796 students tested in grades 3-8 and 11. 62.7% met state standards in reading. In 2010 there was a total of 15,157 students tested in grades 3-8 and 11. 81.4% met state standards in reading.**

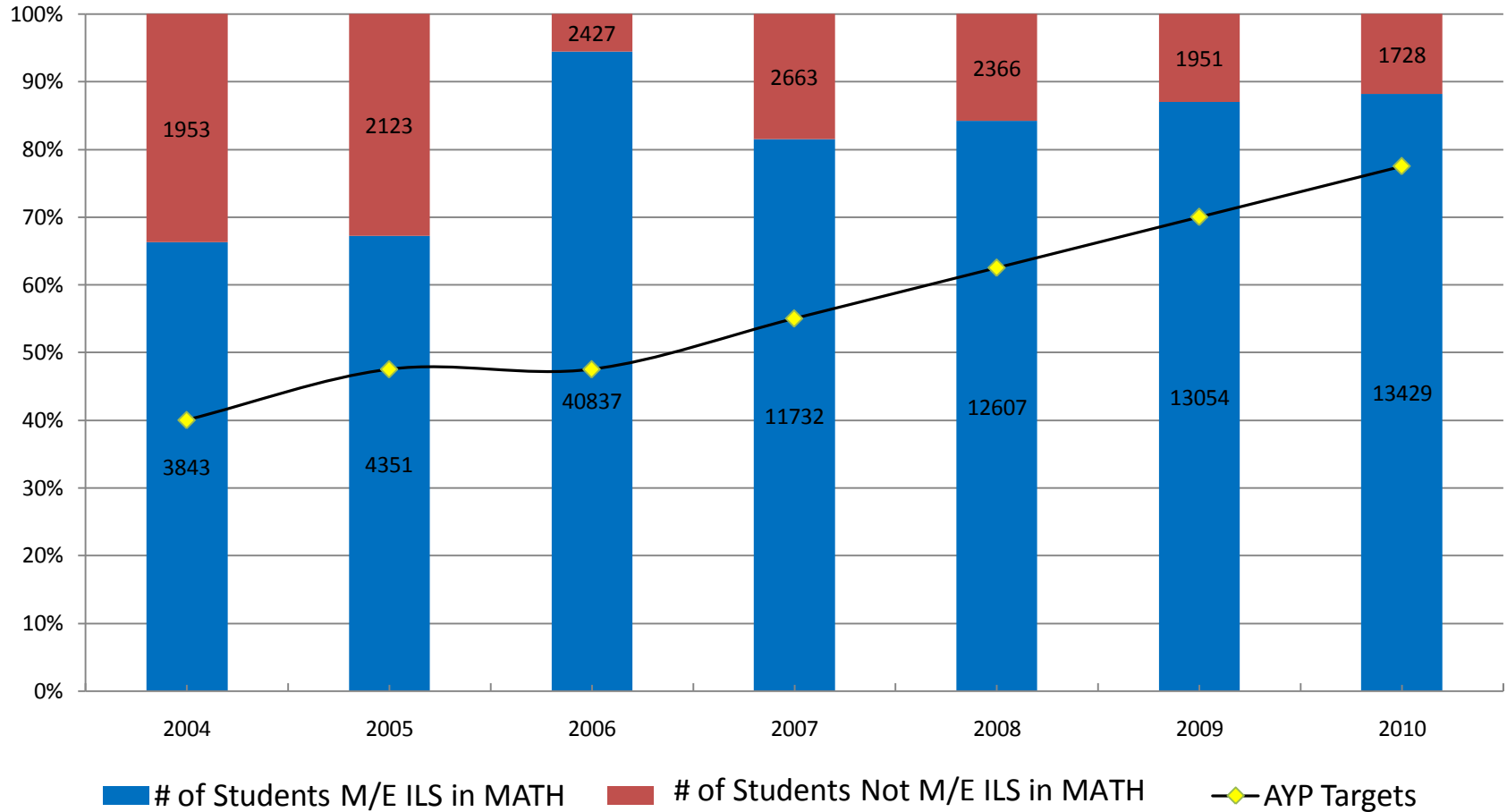
# Seven Year Historical AYP Trend Data Reading by Ethnic Subgroups



# Seven Year Historical AYP Trend Data Reading by Other Subgroups

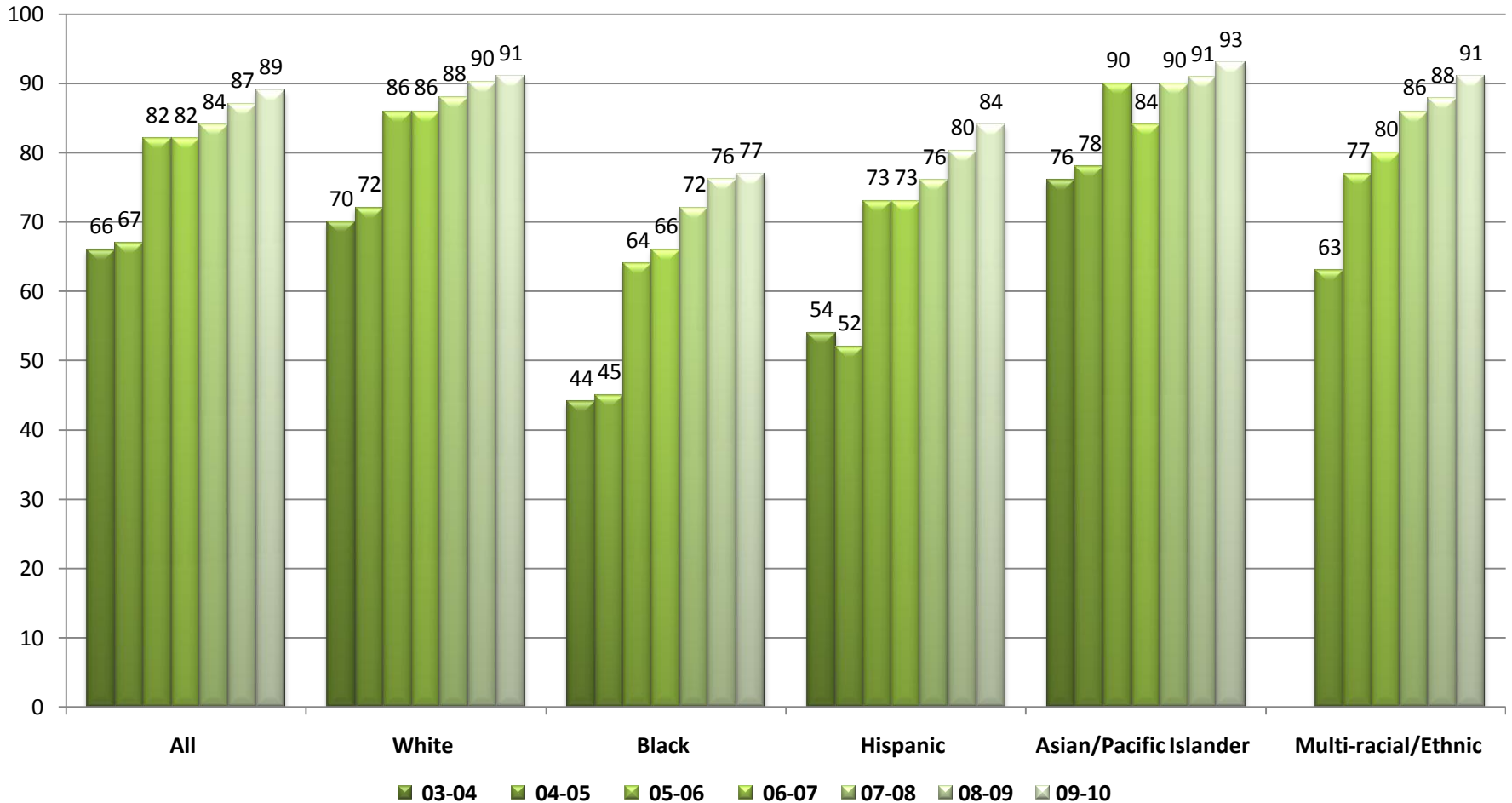


# Math Seven Year Trend

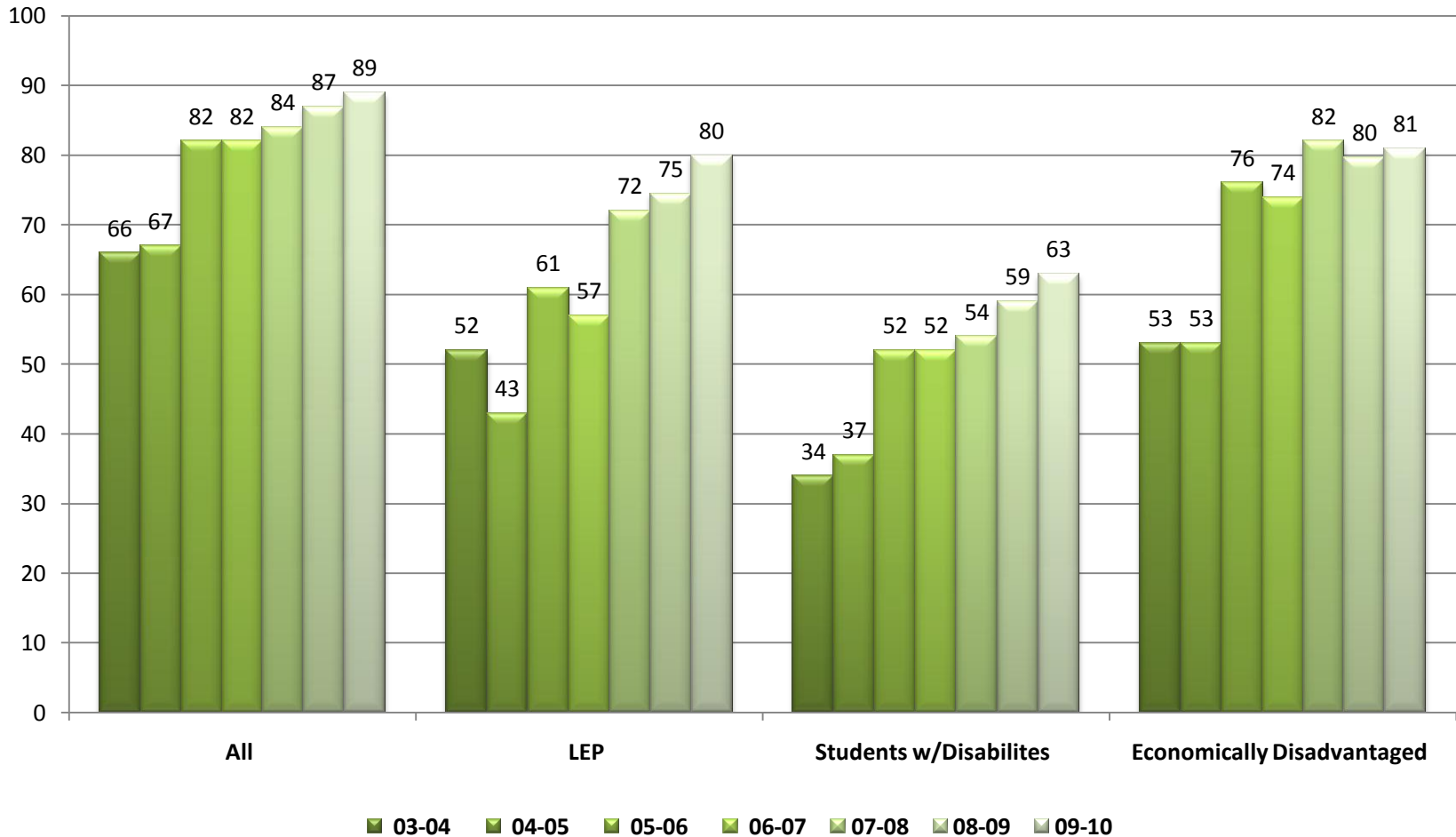


**In 2004 there was a total of 5796 students tested in grades 3-8 & 11. 66.3% met state standards in math. In 2010 there was a total of 15,157 students tested in grades 3-8 & 11. 88.6% met state standards in math.**

# Seven Year Historical AYP Trend Data Math by Ethnic Subgroups



## Seven Year Historical AYP Trend Data Math by Other Subgroups



# PCCSD 202 and ISBE

## 7 Year Gains (% Meets and Exceeds) ISAT Elementary Level

PCCSD 202 Historical ISAT Elementary School Reading				ISBE Historical ISAT Elementary School Reading			
	03-04	09-10	7 Year Net Gain		03-04	09-10	7 Year Net Gain
All	65.3	81.5	+16.2	All	63	74.0	+11.0
White	67.6	86.1	+18.5	White	74.3	85.1	+10.8
Black	42.3	72.3	+30.0	Black	37.8	57.8	+20.0
Hispanic	59.4	67.6	+8.2	Hispanic	52.9	58.4	+5.5
Asian/Pacific Islander	76.2	83.7	+7.5	Asian/Pacific Islander	82.5	88.8	+6.3
Multi-racial/Ethnic	53.8	83.8	+30.0	Multi-racial/Ethnic	67.4	78.5	+11.1
LEP *07/08		49.8	+3.3	LEP		35.2	*-2.6
Students w/ Disabilities	29.3	45.1	+15.8	Students w/ Disabilities	30.3	40.8	+10.5
Economically Disadvantaged	42.8	66.6	+23.8	Economically Disadvantaged	44.8	60.4	+15.6

PCCSD 202 Historical ISAT Elementary School Math				ISBE Historical ISAT Elementary School Math			
	03-04	09-10	7 Year Net Gain		03-04	09-10	7 Year Net Gain
All	81.9	91.3	+9.4	All	75.5	85.2	+9.7
White	83.3	93.6	+10.3	White	86.1	92.5	+6.4
Black	61.2	81.2	+20.0	Black	48.9	70.3	+21.4
Hispanic	80.0	86.6	+6.6	Hispanic	71.6	78.7	+7.1
Asian/Pacific Islander	89.6	93.0	+3.4	Asian/Pacific Islander	93.1	95.4	+2.3
Multi-racial/Ethnic		92.9	+6.1	Multi-racial/Ethnic	77.3	87.3	+8.8
LEP		77.5	-9.4	LEP		65.6	-11.6
Students w/ Disabilities	51.5	68.1	+16.6	Students w/ Disabilities	61.5	62.2	+0.7
Economically Disadvantaged	67.6	83.1	+15.5	Economically Disadvantaged	58.8	81.2	+22.4

\*growth from 07-08 school year to 09-10 school year

# District 202 and ISBE

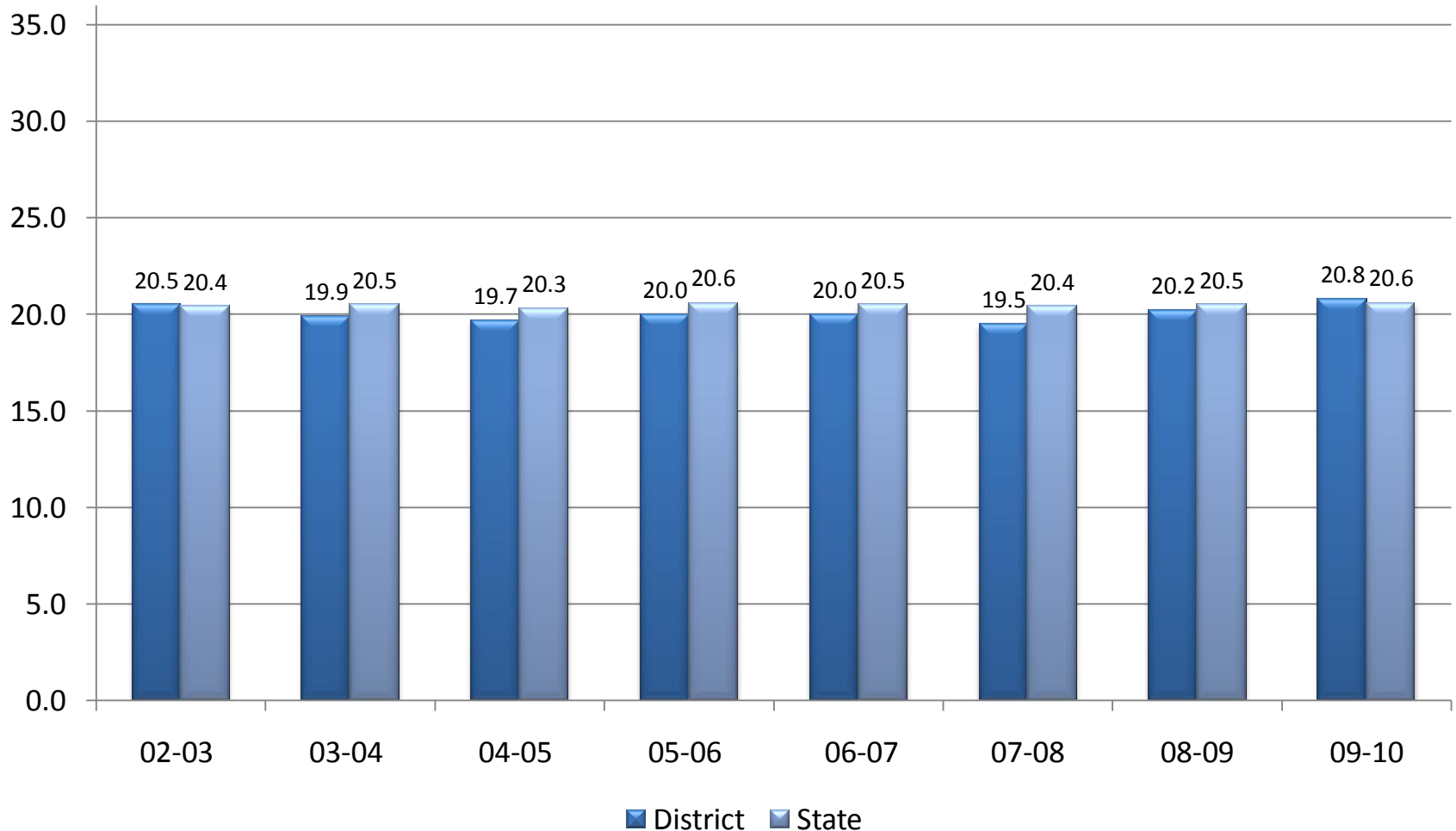
## 7 Year Gains (% Meets and Exceeds) ISAT Middle School Level

PCCSD 202 Historical ISAT Middle School Reading				ISBE Historical ISAT Middle School Reading			
	03-04	09-10	7 Year Net Gain		03-04	09-10	7 Year Net Gain
All	64.8	85.0	+20.2	All	67.1	80.9	+13.8
White	68.3	89.2	+20.9	White	76.3	88.3	+12.0
Black	50.9	74.5	+23.6	Black	48.3	66.9	+18.6
Hispanic	52.8	77.5	+24.7	Hispanic	51.3	72.5	+21.2
Asian/Pacific Islander	65.3	89.7	+24.4	Asian/Pacific Islander	81.5	92.5	+11.0
Multi-racial/Ethnic		82.0	*-3.7	Multi-racial/Ethnic		82.7	*-0.4
LEP		58.1	*+4.6	LEP		35.6	*-4.9
Students w/ Disabilities	16.4	43.5	+27.1	Students w/ Disabilities	24.2	42.8	+18.6
Economically Disadvantaged	43.1	73.5	+30.4	Economically Disadvantaged	76.9	70.3	-6.6

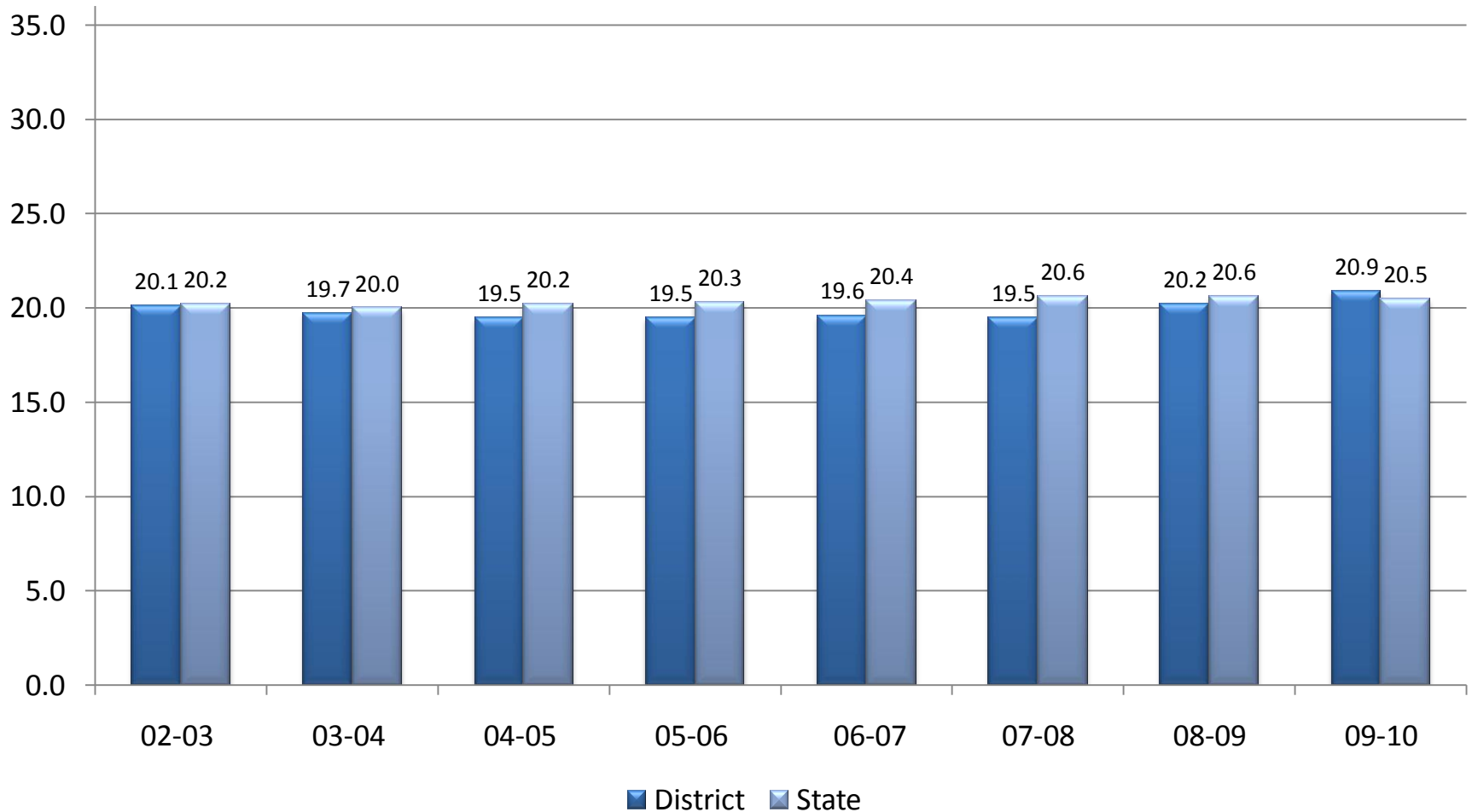
PCCSD 202 Historical ISAT Middle School Math				ISBE Historical ISAT Middle School Math			
	03-04	09-10	7 Year Net Gain		03-04	09-10	7 Year Net Gain
All	44.6	90.7	+46.1	All	54.4	84.2	+29.8
White	48.7	93.4	+44.7	White	66.7	90.8	+24.1
Black	28.2	80.2	+52.0	Black	24.6	68.4	+43.8
Hispanic	29.2	87.1	+57.9	Hispanic	38.7	79.6	+40.9
Asian/Pacific Islander	55.1	95.7	+40.6	Asian/Pacific Islander	81	95.0	+14.0
Multi-racial/Ethnic		90.7	*-4.2	Multi-racial/Ethnic		84.9	*-0.03
LEP		76.0	*+7.0	LEP		55.0	*-0.7
Students w/ Disabilities	10.2	58.8	+48.6	Students w/ Disabilities	13.9	50.0	+36.1
Economically Disadvantaged	25.7	83.9	+58.2	Economically Disadvantaged	32.5	75.0	+42.5

\*growth from 07-08 school year to 09-10 school year

## Average ACT Score Trend Data for Graduating Class 2003-2010 Reading



## Average ACT Score Trend Data for Graduating Class 2003-2010 Math



# District 202 and ISBE

## 7 Year Gains (% Meets and Exceeds) PSAE High School Level

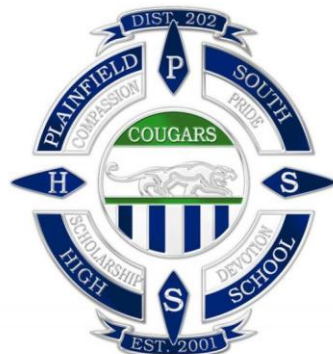
PCCSD 202 Historical PSAE High School Reading				ISBE Historical PSAE High School Reading			
	03-04	09-10	7 Year Net Gain		03-04	09-10	7 Year Net Gain
All	54.10	62.5	+8.4	All	56.8	54.0	-2.8
White	58.6	69.3	+10.7	White	65.3	65.7	+0.4
Black	30.6	34.2	+3.6	Black	31.7	27.6	-4.1
Hispanic	38	54.4	+16.4	Hispanic	34.5	33.2	-1.3
Asian/Pacific Islander	65.8	63.4	-2.4	Asian/Pacific Islander	65	65.8	+0.8
Multi-racial/Ethnic		61.4	+29.9	Multi-racial/Ethnic		57.4	+6.8
LEP			+4.0	LEP			+0.3
Students w/Disabilities	10.2	27.1	+16.9	Students w/Disabilities	16.1	17.2	+1.1
Economically Disadvantaged	40.6	44.7	+4.1	Economically Disadvantaged	32.6	31.9	+12.1

PCCSD 202 Historical PSAE High School Math				ISBE Historical PSAE High School Math			
	03-04	09-10	7 Year Net Gain		03-04	09-10	7 Year Net Gain
All	49.3	65.0	+15.4	All	53	52.7	-0.3
White	54	71.6	+18.1	White	62.5	64.8	+2.3
Black	17.7	36.2	+18.2	Black	20.4	20.4	0
Hispanic	30.3	55.1	+18.4	Hispanic	30.7	33.8	+3.1
Asian/Pacific Islander	73.7	81.7	-2.1	Asian/Pacific Islander	75.1	77.4	+2.3
Multi-racial/Ethnic		57.9	+29.2	Multi-racial/Ethnic		52.6	-0.3
LEP			+7.2	LEP			-1.8
Students w/Disabilities	3.8	17.8	+6.4	Students w/Disabilities	12.1	13.4	+1.3
Economically Disadvantaged	31.3	44.7	+17.8	Economically Disadvantaged	25.5	29.0	+3.5

\*growth from 07-08 school year to 09-10 school year

# High School Achievement

- Highest ACT scores in reading in over 7 years
- Highest ACT scores in math in over 7 years
- A 70% increase in AP Scholars
  - 49 AP Scholars in 2008
  - 61 AP Scholars in 2009
  - 104 AP Scholars in 2010



# District 202 and ISBE

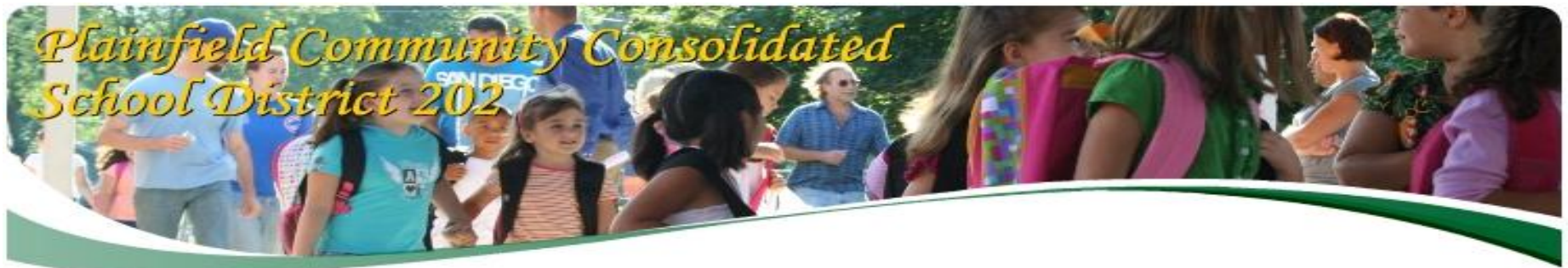
## 7 Year Gains (% Meets and Exceeds) ISAT/PSAE All Levels

PCCSD 202 Historical ISAT and PSAE All Levels Reading				ISBE Historical ISAT and PSAE All Levels Reading			
	03-04	09-10	7 Year Net Gain		03-04	09-10	7 Year Net Gain
All	61.4	76.3	+14.9	All	62.3	69.6	7.3
White	64.8	81.5	+16.7	White	72.0	79.7	7.7
Black	41.3	60.3	+19.0	Black	39.3	50.8	11.5
Hispanic	50.1	66.5	+16.4	Hispanic	46.2	54.7	8.5
Asian/Pacific Islander	69.1	78.9	+9.8	Asian/Pacific Islander	76.3	82.4	6.1
Multi-racial/Ethnic		75.7	*3.9	Multi-racial/Ethnic	39.3	72.9	33.6
LEP			*+5.3	LEP	4.2	25.6	21.4
Students w/ Disabilities	18.6	38.6	+20.0	Students w/ Disabilities	23.5	33.6	10.1
Economically Disadvantaged	42.2	61.6	+19.4	Economically Disadvantaged	51.4	54.2	2.8

\*growth from 07-08 school year to 09-10 school year

PCCSD 202 Historical ISAT and PSAE All Levels Math				ISBE Historical ISAT and PSAE All Levels Math			
	03-04	09-10	7 Year Net Gain		03-04	09-10	7 Year Net Gain
All	58.6	82.3	+23.7	All	61.0	74.0	13.0
White	62.0	86.2	+24.2	White	71.8	82.7	10.9
Black	35.7	65.9	+30.2	Black	31.3	53.0	21.7
Hispanic	46.5	76.3	+29.8	Hispanic	47.0	64.0	17.0
Asian/Pacific Islander	72.8	90.1	+17.3	Asian/Pacific Islander	83.1	89.3	6.2
Multi-racial/Ethnic		80.5	*+6.7	Multi-racial/Ethnic	56.3	74.9	18.6
LEP			*+7.1	LEP	43.1	46.0	2.3
Students w/ Disabilities	21.8	48.2	+26.4	Students w/ Disabilities	29.2	41.9	12.7
Economically Disadvantaged	41.5	70.6	+29.1	Economically Disadvantaged	38.9	61.7	22.8

Note: These calculations are based on averages of the averages from the ES, MS, and HS slides.



- Math continues to improve for all students
- Continued work in Reading & Language Arts (implementation of resources & development of common assessments) should result in similar trends as we have seen in math
- The 2010-2011 district-wide Teacher Institute has had a focus on literacy
- High school performance has continued to improve and is at its highest level as trend data indicates



- We have not fully implemented Reading & Language Arts curriculum (curriculum, resources, assessments)
- It is imperative that reading/literacy continue to be an area of district-wide focus
- There is a risk of the achievement gap widening

**Overall district composite scores are at their highest level.**