



# Plainfield East High School — 2011-2012

12001 S. Naperville Road — Plainfield, IL 60585

Dr. John Harper, Superintendent • Mr. Anthony Manville, Principal • Mrs. Jill Sperling Associate Principal

PRIDE — RESPECT — INTEGRITY — COMMITMENT

### Plainfield East High School

Plainfield East High School is a four-year comprehensive high school with a current enrollment of 1,850. Plainfield East High School is fully accredited by the North Central Association of Colleges and Secondary Schools and the Illinois State Board of Education.

The school day consists of seven (7) fifty-six (56) minute periods. There are 174 pupil attendance days, two parent teacher conference days, and four teacher institute days on the school calendar.

### Community

Plainfield Community Consolidated School District 202 serves a sixty-four square mile area in the southwest suburbs, about 40 miles from Chicago, encompassing all or parts of Bolingbrook, Crest Hill, Joliet, Lockport, Naperville, Plainfield, and Romeoville and unincorporated Will and Kendall counties.

The School District has numerous housing developments offering easy access to I80, I55, I355 and the Metra lines to the City of Chicago. The District has a mix of rural, small town, and suburban living areas. The District is currently served by an early childhood center, an alternative school, seventeen elementary schools (K-5), seven middle schools (6-8), and four high schools (9-12).

### Grades

The Grade Point Average (GPA) is computed taking the sum of the quality points times the credit value of the course for earned semester grades and dividing this sum by the cumulative credits attempted. Weighted grades are used in advanced placement (AP) and honors courses.

	AP/ Honors	Non- Weighted	Grading Scale
A	6.1	5.0	90-100
B	5.1	4.0	80-89
C	4.1	3.0	70-79
D	3.1	2.0	60-69
F	0.0	1.0	0-59

### Graduation Requirements

<u>Areas of Study</u>	<u>Required Credits</u>
English	4 credits
Mathematics (Algebra 1, Geometry & Algebra 2)	3 credits
Science (Biology, Chemistry & Physics)	3 credits
Social Science*	2 credits
Consumer Education**	.5 credit
Physical Education***	4 credits
Art, Music, Foreign Language, Vocational Education	1 credit
<b>Total Credits</b>	<b>21 credits</b>

\*Including US History and Government

\*\*May be completed via Economics, Consumer Education or a Work Cooperative Experience

\*\*\*Includes Physical Education, Driver Education, and Health

#### School Counselors and Registrars by Alpha

Mrs. Hernandez (A-Deh & ELL)  
mhernand@psd202.org

Mrs. Belcastro (Dei-Hh)  
cbelcast@psd202.org

Mrs. Gatses (Hi-Mof)  
pgatses@psd202.org

Ms. Pawlak (Mog-Rum)  
mpawlak@psd202.org

Ms. Witkowski (Run-Z)  
jwitkows@psd202.org

Mrs. Contreras, Registrar (A-K)  
Mrs. Siekerman, Registrar (L-Z)

#### Advanced Placement Average Scores 2011

Biology	2.7
Calculus	2.1
Chemistry	2.3
Comparative Government	5.0
English Language	2.5
English Literature	2.7
Environmental Science	2.0
French	1.7
German	2.0
Microeconomics	1.9
Psychology	2.9
Physics	2.7
Spanish Language	2.8
Spanish Literature	2.8
Statistics	4.6
Studio Art 2D	3.4
US Government	2.0
US History	3.2

#### ACT Profile

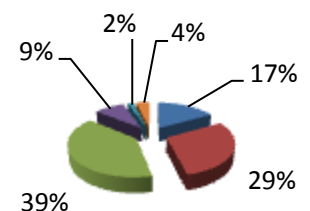
Year	Number	Comp
2009-10	330	19.6
2010-11	499	19.1

#### Class of 2011

The Class of 2011 was PEHS' first graduating class. 350 students received a diploma with a high school graduation rate of 93.1%.  
 4-Year College: 40%  
 2-Year College or Trade: 42%  
 Military: 1%  
 Work Force: 17%

#### Demographic Information

- Black - 17.04%
- Hispanic - 29.59%
- White - 39.69%
- Asian - 8.71%
- Native Amer - 1.70%



**We are excited to have your college visit! Please contact Catherine Hirschauer at (815) 577-0360 to schedule an appointment.**

