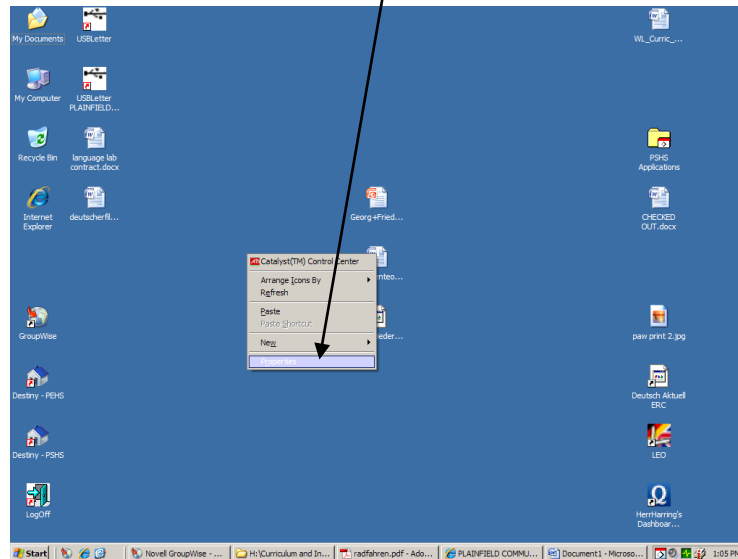


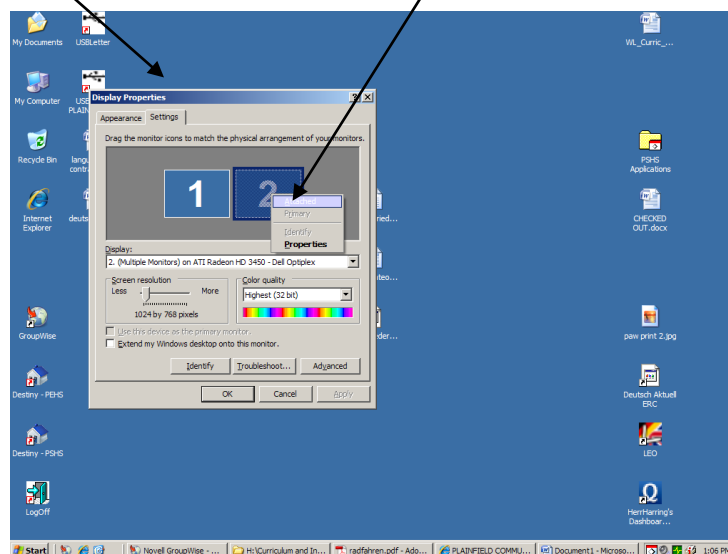
Overhead Projector as a 2nd Monitor- Set up and Undoing

1. Sometimes, it makes sense to have your overhead projector work as a second monitor. The easiest example is when you would want to show a film clip to students, but you need to be entering attendance, opening other files to have for later, or inputting grades. To do this, you want to “attach a second monitor.”

- Right click anywhere on the desktop, and select “properties”



- Select the “Settings” tab
- right click on the blue screen that says 2 and left click “attached”
- Then click OK



You now have a “second monitor” off to the right of your current monitor, and only what is on the right will be displayed from the projector.

2. TO UNDO THIS.

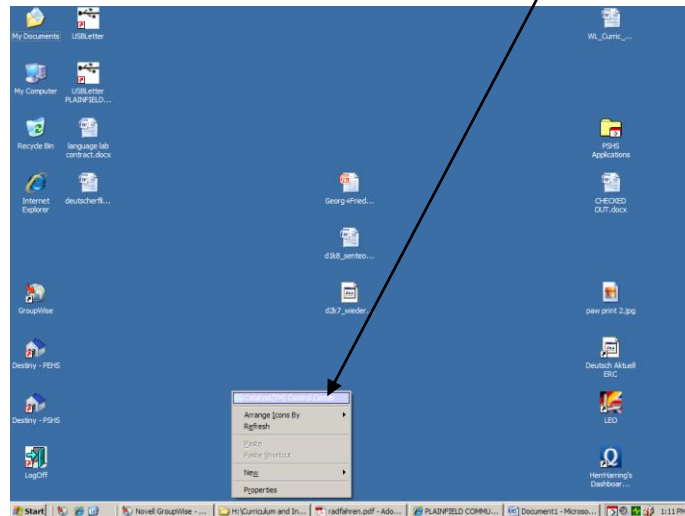
For some reason, it is *slightly* more complicated to undo this process. But it is only a few extra steps. (The first three steps follow the same directions as the previous page for setting up two monitors)

- First, right click again on the desktop and select “Properties” again.
- Select the “Settings” tab and then right click on the blue square with the number 2
- This time, **UNCHECK** where it says “attached” (click on it again)

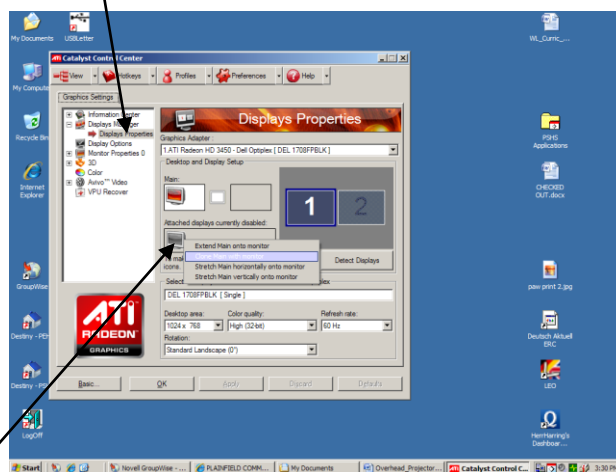
Your computer screen should still look the same, but the screen projected on the board should be dark blue and say something along the lines of NO SIGNAL.

Here is where the extra steps come in...

- Right click on the desktop and this time select “Catalyst Control Center”



- If this is the first time you are opening Catalyst, it will ask if you want Advanced or Basic view. Select Advanced and click OK.
- Now you want to select “Displays Manager” in the white vertical rectangle on the left of the window.



- Right click on the gray computer in the gray box underneath the boxes that say “Main” and “Clone”
- Click “Clone main with monitor” and click OK